

1) **First Place Ribbon Winning 22" Kestner '143'** - All Original- Wig to Red Leather Shoes, Mint bisque & body (sgnd), Red Silk Factory Dress & Matching Cap. A Valentine! \$895

2) **Charming and Rare 'Wagner' Cottage** - Bright and original litho over wood, Bay Windows, w/ Hand-painted Azaleas & Upper balcony, very spacious 2-Floor interior includes Bays. 19" tall x 15" wide x 12" deep. Rarely offered! \$895

3) **21" Kley Hahn Extra Chubby Toddler** - great doll! Fully Jointed Op/Clo Mouth w/ Mld. Tongue & Teeth, period playsuit; A charmer. \$650

4) **'Fiona' - 21" Attic Original 'One Owner Doll'** - bent knee toddler, fresh to market, bright and lively eyes, happy smiling character face w/ molded tongue and Factory Wig! \$650

5) **1930's Boxed Valentine** - Splendid lithography, orig mailer box w/ lid, a 'Ring Toss' Valentine! 5" by 6". Excellent! \$39

6) **Early & Mint 8" K*R '192' Mariner** - All Original in Fancy Dress / undies, Mint Wig, sl/ eyes, Nautical Jacket & Hat. \$395

7) **17" Early 'Tickletoes' by Ideal** - Factory Orig. Mint Ensemble w. leatherette Booties; Flirty Tin Litho Eyes, orig. 'Matte Finish' in clean pretty color! One owner! \$190

8) **Mint 7" Heubach Winker** - top quality, orig. Toddler Body & Period Clothes, Rare! \$650. **Kestner All Bisque 6" Campbell Kid Googly** - molded caramel hair, watermelon smile, side glancing eyes, jtd.limbs, extra pretty Vintage Dress. \$450

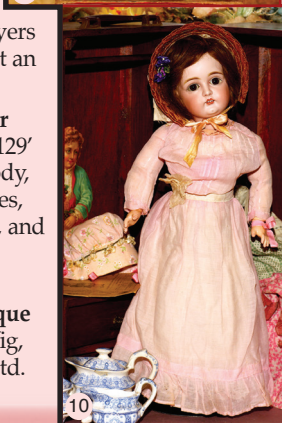
9) **All Original 23" Heirloom Handwerck** - Gorgeous! Mint hip length Factory Wig, blue sl. eyes, scarce mold '69', orig.HH Body, Leather Shoes & lovely layers of delicate Victorian finery. What an Angel. \$895

10) **Two Generation 20" Kestner Heirloom** - All Original scarce '129' - Wig to Leather Shoes, sgnd. body, plus 6-Second Generation Dresses, Hats & patterns w/ Accessories, and stunning decoupage Trunk to contain it all! Mint! \$895

11) **Cute 4.5" Glass Eye All Bisque Character** - orig. uncut Blond Wig, Closed Lips, 3-piece outfit, and jtd. limbs! Hello! \$140



Happy Valentine's Day



Matrix

(212) 787-7279
 P.O. Box 1410
 NY, NY 10023

Quality Antique Dolls by Mail
 Return Privilege • Layaways
 Member UFDC & NADDA
matrixbymail@gmail.com

MasterCard VISA PayPal



12) Important 15" SFBJ 238 Mariner - choice French Character- as shown in Coleman's Vol.2. All Original from Hat & Wig to Signed Shoes. Oily sheen & lively PW Eyes! \$2600

13) 22" Early Bebe Raberry et Delphieu Parlant - Pressed bisque, blue PWs, shaded lids, 3-upper & 2-lower Square Teeth, mint Stiff Wrist Signed Body w. Pull Cord Crier, mint fancy Factory Chemise & Leather Shoes. Such esprit! \$3250



14) Important Bliss French Villa - Early 'Blue Roof' model (inquire), twin salons with 9.5" ceilings; clean Original Papers inside and out! Lovely condition, 16"x 10"x 22" tall w/ rare Chimney. \$1650



15) Rare! John Christian Rauschner - 9"x10" gold framed Wax Portrait (sgnd). A late 1700s Historic Rarity! \$1200



Matrix

(212) 787-7279
P.O. Box 1410
NY, NY 10023

Quality Antique Dolls by Mail
Return Privilege • Layaways
Member UFDC & NADDA

matrixbymail@gmail.com







16) A fine quality 20" Eden Bebe - the early "Sweet Faced" model w. dreamy PWs w/ lacy lashes, soft multi-stroke brows, fully sgnd. head w/ cork pate, mint orig. Jtd. body. A Petit Four in pink! \$2250: All Bisque Kestner '150'- All Original 5.5" vintage Clo/Mo Sweetheart! \$195



17) All Original 19" Moon Face Steiner - Earliest Steiner Bebe, goat skin wig, perfect teeth, mint pale bisque with original jtd. Stiff Wrist Body and Original Period Clothes & Shoes. Museum worthy rarity. \$7900



18) Mint & Original 1860's China Pair - exquisite 7.5" Miniature Couple w/ orig. porc. limbs; very special faces & multiple brush mark hair. Layers of detailed Factory Clothing! Blue Ribbon worthy. \$1495
 19) Early 1860's Valentine w. Envelope - lovely 5" by 7" silver and gold Tracery on Blue Silk w. Still has pretty embossed envelope! \$69

20) A 17" Pre-1900 Closed Mouth Child Fashion - haunting PW eye beauty, swivel head, w/ square teeth plus Uncut Factory Wig; romantic Orig. Clothes w. Matching Shoes. So very antique! \$695

Matrix (212) 787-7279
 P.O. Box 1410
 NY, NY 10023

Quality Antique Dolls by Mail
 Return Privilege • Layaways
 Member UFDC & NADDA

matrixbymail@gmail.com



21) Extremely Rare 8" Factory Original Bebe Steiner - Size '0' - w. Fully Jointed Stiff Wrist Sgnd Body, Factory Pate & Wig, Factory Original Silk Dress & matching wire frame Orig. Bonnet & Shoes! Precious! \$3495

22) Mint 10" Bebe Steiner - Lovely satin bisque w. Closed Mouth, blue PWs, Plus Factory Pate, Uncut Wig, Shoes, Socks and mint Sgnd Body; detailed silk on silk Couture w. Matching chapeau. \$2350

23) 17" Very Important S.H. 1303 Character-life like portrait w. oily sheen bisque; Close Mouth, Orig. factory eyelashes, fully Jtd. Lady Body w. Molded Bust and Heeled Shoes. A rarely seen prized Halbig Lady. \$4995

24) Historic and Rare 16" Hatted Waxes - with slender Milliner's Bodies, period clothes, glass eyes; she w. Poke Bonnet & hang curls, the rare male w. Top Hat & sideburns. Impossible to find treasures. \$1795

25) Stunning Bisque Head Jester in Brilliant Factory Silks - 20" tall, w. Orig 9" Pointed Silk Hat & Wig; Extreme Character Modeling for this size doll. An opulent Polichinelle impossible to find. Total luxury! \$1800

